

Cross-speaker covariation across six vocalic changes in New York City English

Bill Haddican, Cecelia Cutler, Michael Newman and Christina Tortora

Abstract

This article examines differences in the way that innovative variants for six vocalic changes in New York City English—TOO-fronting, raising of PRICE and FACE and lowering of BAD, THOUGHT and DRESS—co-occur across speakers, and explores social correlates of these patterns of covariation. We report on an analysis of a recently developed corpus of conversational speech from 140 speakers. The analysis suggests that patterns of covariation across speakers are conditioned by the local social embedding of the changes. Changes affecting highly localized realizations for raised BAD and THOUGHT are distributed differently from supra-local changes affecting TOO and DRESS.

Keywords: Covariation, New York City English, vocalic change

1 Introduction

A recurring finding in recent sociolinguistic research is that processes of change in a given community often exhibit different patterns of co-occurrence across speakers conditioned by locally defined sets of meanings. Based on an analysis of cross-speaker covariation in six vowels in Philadelphia English, Tamminga (2019) reports that the three features showing significant pairwise correlations are all sound change reversals, plausibly motivated by avoidance of local forms highly emblematic of local speech. Similarly, Becker (2016) suggests that covariation in THOUGHT-lowering and rhoticity in New York City English (NYCE) reflect in part speakers’ disalignment with a “classic New Yorker” persona. Likewise, Newlin-Łukowicz (2016) reports that co-occurrence of TH-stopping, THOUGHT-raising and traditional short-a forms in English among New York City Poles correlates with different orientations to Polish New York, America and Poland. This article builds on these results, examining patterns of covariation in six vocalic changes in NYCE.

Over the past decade, several independent studies have described decline in use of traditional vocalic features of NYCE. Most of this work has focused on one of two changes—lowering of THOUGHT and the phonological reorganization of the short-a system (Becker and Wong, 2010; Becker, 2009, 2014; Newman, 2014; Wong, 2007, 2010, 2014; Wong and Hall-Lew, 2014; Newlin-Łukowicz, 2016; Coggshall, 2017; Shapp, 2019; Haddican et al., 2021). In this paper, we examine change in these two lexical sets (focusing specifically on BAD¹ for short-a sounds) alongside four other vocalic shifts that have received less attention in the

literature on NYCE, namely changes affecting PRICE, FACE, DRESS and TOO. In particular, we examine social correlates of covariation across these six shifts in an effort to describe different ways that meanings of ethnicity, age and place are affecting the course of these changes. The data we report on here are drawn from a corpus of conversational speech from 140 native speakers of New York City English consisting of just over 100,000 tokens.

Our results suggest that patterns of covariation are shaped by the local social embedding of changes. In particular, while young White speakers are conservative with respect to THOUGHT and short-a sets—linked in much previous literature to traditional White working class New York City personas (Becker, 2010, 2014, 2016; Becker and Wong, 2010; Newlin-Łukowicz, 2016)—younger White speakers are also leading changes toward supra-local features including DRESS-lowering and TOO-fronting. Conversely, non-White groups, particularly younger Latinx and Asian participants, are diverging sharply from raised THOUGHT and BAD, but trail in adoption of innovative forms for TOO and DRESS. From one perspective, then, our results align with other recent findings of “incoherence” across innovations in speech communities, i.e. that individuals’ relative rates of participation in different changes in a community are largely non-uniform (Guy, 2013; Oushiro and Guy, 2015; Waters and Tagliamonte, 2017; Tamminga, 2019, to appear). At the same time, these patterns of covariation show clear social conditioning that align with recent results linking certain of these changes to meanings of age, gender and place (Becker, 2010, 2014; Wong, 2014; Wong and Hall-Lew, 2014).

Our discussion is organized as follows. In section 2, we describe the data set reported on in this paper and the analysis used. Section 3 describes each of the six patterns of change considered here. Section 4 discusses results from a cluster analysis that illuminates the social patterning of (non-)participation in these vocalic changes.

2 Data

The data set used here were gathered through the CoNYCE project, a four-year project, currently in progress, to develop an audio-aligned and parsed corpus of spoken New York City English (Tortora et al., in progress). The sub-sample discussed here consists of audio recordings of 140 speakers with years of birth ranging from 1906 to 2001 ($M = 1977.9$). 82 of these participants self-identified as women and 58 as men. All of the participants reported having lived in the greater New York area—the five boroughs, Nassau, Suffolk and Westchester counties of New York or northern New Jersey, from the age of nine or younger.

The distribution of participants by age and ethnic category is summarized in Figure 1. Younger speakers were over-sampled in an effort to better describe patterns among younger New Yorkers. While vocalic patterns for older speakers are well described in extensive work dating back several decades (Trager, 1930, 1934, 1940; Labov, 1966, 1972, 2007), much less description exists for the novel vocalic patterns of younger New Yorkers and particularly younger New Yorkers of color, which we aim to address in part in this paper. Also noteworthy in Figure 1 is that Asian and Latinx participants in the study are younger on aggregate than Black and White participants, a fact that partially reflects demographic change in the city shaped by the Immigration and Nationality Act of 1965 (Hart-Cellar Act) (Foner, 2001; Anbinder, 2016; Becker and Cogshall, 2009). We discuss the implications of this imbalance

for data modeling in Section 3.

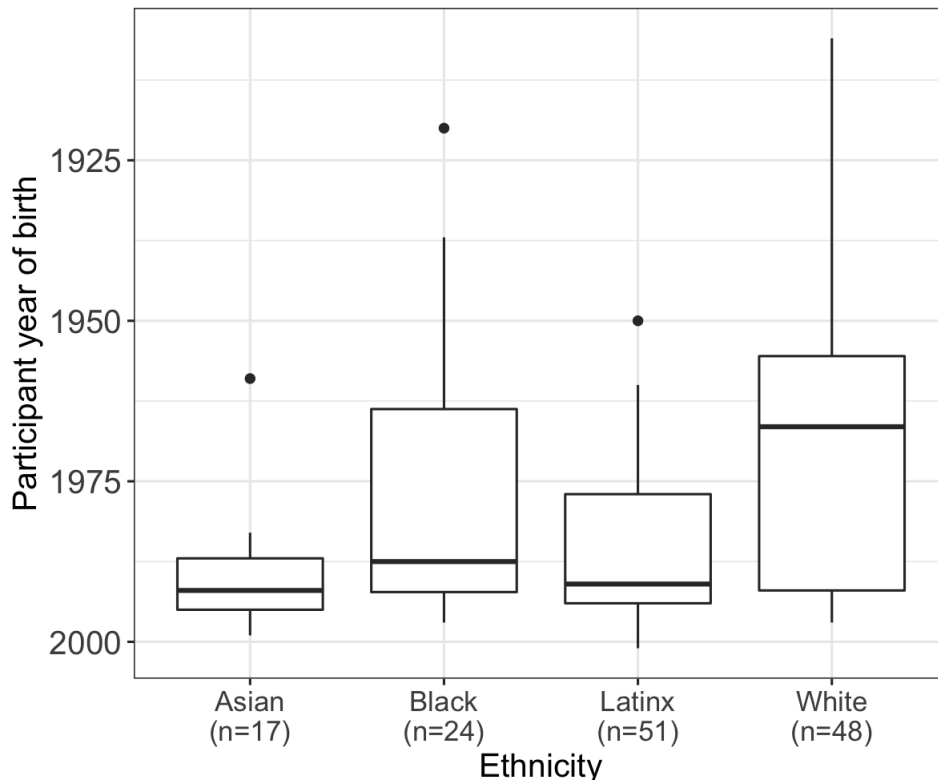


Figure 1: Distribution of sample participants by year of birth and ethnic category.

The audio samples used here come from two sources. 135 of the samples are sociolinguistic interviews gathered between 2015 and 2018 by undergraduate and graduate students at the City University of New York, trained by the project PIs. The interviews were based loosely on a template of questions focusing on childhood narratives and changes in the community, and concluding with a set of questions focusing on participants’ perceptions of language use in New York and New York City accent features. These samples typically last between 30 and 60 minutes. These recordings were made using Zoom H4N digital recorders at a sampling rate of 44100 Hz. Nearly all of student workers on the project are themselves native members of greater NYC communities and typically recruited participants from their home communities. The other five samples are oral history interviews conducted during the 1980s through the Bronx Oral History Archive project, which have been incorporated into the CoNYCE data set.

Measurements for the first and second formant for each vowel in the data set were extracted using FAVE-Extract (Rosenfelder et al., 2014)² and Prosodylab-Aligner (Gorman et al., 2011), using the DARLA interface (Reddy and Stanford, 2015). We include only tokens bearing primary word stress and have excluded all contexts preceding coda /r/. Vowel measurements were normalized using Lobanov’s procedure (Lobanov, 1971).

For each of the six lexical sets, we fit linear mixed effects regression models using the lme4 package (Bates et al., 2015) in R (R Core Team, 2014). P-values were estimated using Satterthwaite’s method using lmerTest library in R (Kuznetsova et al., 2016). Variables in

Lexical Set	n
DRESS	25,213
FACE	22,684
BAD	4,478
PRICE	18,060
THOUGHT	13,926
TOO	16,059

Table 1: Token numbers by lexical set

the model were selected using a step-up procedure with models compared via likelihood ratio tests. Candidate variables for selection were those in (1), chosen based on analysis of the data and previous work on NYCE. For each of the six lexical sets considered here except THOUGHT and short-a change, we summarize analyses of social and linguistic predictors of these processes of change in Section 3. The latter lexical sets are well described in the recent diachronic literature on NYCE and, for reasons of space, we do not discuss our replications of these results here.

- (1)
- Age (in 2020)
 - Ethnicity³
 - Parent first dialect⁴
 - Gender
 - Scaled occupational prestige⁵
 - Preceding sound
 - Following sound
 - Decadic log of vowel duration (seconds)
 - Decadic log of word frequency⁶

To identify patterns of common realizations across these six sets, we use a Diana clustering procedure, a divisive clustering technique (Kauffman and Rousseeuw, 1990). Unlike agglomerative techniques which assign items to clusters by merging nodes bottom-to-top, divisive techniques start with the entire data set as a single cluster and divide clusters into nested sets of terminal nodes and binary branching non-terminal nodes. This technique is particularly well suited to identifying higher-level splits in the data, the primary focus our analysis. The clustering is based on by-participant estimates for each of these six sets. Specifically, for each of the six sets, LMER models were fit with the structure in (2). The predictors in the model are used only to control for linguistic conditioning effects, and no participant-related fixed effects are included. From each of these models, we extracted random intercepts for each participant as the by-participant measure for the clustering algorithm. These by-participant intercepts were then scaled to balance the influence of each lexical set on distance measurements.⁷ Distances between speakers using values for each of six lexical sets were computed using the Euclidean distance method, i.e. the square root of the sum of differences.⁸

- (2) [F1/F2/Front diagonal] \sim Preceding sound + Following sound + $\text{Log}_{10}(\text{duration}) +$

$$\text{Log}_{10}(\text{Word frequency}+1) + (1 \mid \text{Speaker}) + (1 \mid \text{Word})^9$$

The clustering technique just described therefore provides a representation of overall similarity between sets of speakers in vocalic production across these six features. To assess the *social patterning* of covariation across these changes, we avoided tuples of features for which covariation could plausibly be attributed to structural rather than social factors. Oushiro and Guy (2015), for example, found that covariation across six features (15 pairwise comparisons) was determined in part by structural relationships among the variables. (See also Guy (2013).) Similarly, cross-speaker covariation across vocalic features implicated in chain shifts is described in an extensive body of results (Eckert, 2000; Watt, 2000; Haddican et al., 2013; Fruehwald, 2013; Kendall and Fridland, 2017; Fridland and Kendall, 2019; Becker, 2019b). For these reasons, the analysis below includes vocalic changes that are phonologically independent. We describe these in greater detail in the following section.

3 Six vocalic changes

3.1 TOO-fronting

New York City English (NYCE) has generally been described as conservative with respect to the fronting of high back vowels across contexts (Labov et al., 2005). More recently, however, three studies have reported evidence of fronting in certain contexts and speaker groups. Newman (2014), reports some fronting of post-coronal /u/ (TOO), particularly among White and Asian speakers. Similarly, Wong (2014) finds some fronting of BOOT (non-post-coronal, non-pre-lateral /u/) among younger Chinese-Americans. Most recently, Haddican et al. (2019), based on conversational speech samples from 97 native NYCE speakers, report evidence of fronting of TOO, BOOT, FOOT and GOAT, in a pattern similar to that described for California English (Eckert, 2008; Hall-Lew, 2009; Podesva, 2011; Podesva et al., 2015; Cheng, 2016). In their data, fronting across these lexical sets correlates strongly across speakers suggesting a single abstract process of back vowel fronting affecting these four contexts.

Again, because the focus of our analysis is on the social patterning of phonologically independent vocalic changes, we do not consider all four of these high back lexical sets (which are indeed all undergoing fronting in our data set) but instead focus on one—TOO—which affords a robust quantity of observations/participant ($M = 101$). We begin by summarizing an LMER model of TOO-fronting in Table 2. The results here are based on an 88-speaker subset, excluding participants born before 1972, which provides a sample more appropriately balanced for age and ethnicity. As noted above, the oldest segment of our sample is almost exclusively White and Black, and largely excludes Asian and Latinx participants. We remove older participants’ data in most of the models summarized in this section, but include it in the cluster analysis presented in Section 4.

The summary in Table 2 lists first a negative effect of age, with older participants favoring, as expected, lower F2 values. Following this are effects of following sound and duration, which we do not dwell on here. Finally, the analysis reveals an effect of ethnicity with younger Asian and White participants tending toward fronter realizations relative to Latinx participants (the reference level), a pattern previously reported in Newman (2014). The analysis revealed no main effects or interactions for participant gender, occupation level or parent first dialect.

	Estimate	Std. Error	df	t value	Pr(> t)
(Intercept)	0.562	0.138	102.614	4.066	0.000
Age	-0.017	0.004	81.110	-4.017	0.000
Following: lab., [+back] ¹⁰	-0.140	0.019	109.459	-7.192	0.000
Log₁₀(duration)	0.182	0.023	8434.120	7.904	0.000
Ethnicity: Asian	0.234	0.063	81.808	3.717	0.000
Black	0.050	0.068	80.672	0.735	0.465
White	0.319	0.059	81.423	5.378	0.000

Table 2: Summary of an LMER model of F2 for TOO. Model formula: $F2 \sim \text{Age} + \text{Following sound} + \text{Log Duration} + \text{Ethnicity} + (\text{Following sound} \mid \text{Speaker}) + (1 \mid \text{Word})$. Obs.=8720, N=88. Reference levels: *[Back]* for following sound and *Latinx* for Ethnicity.)

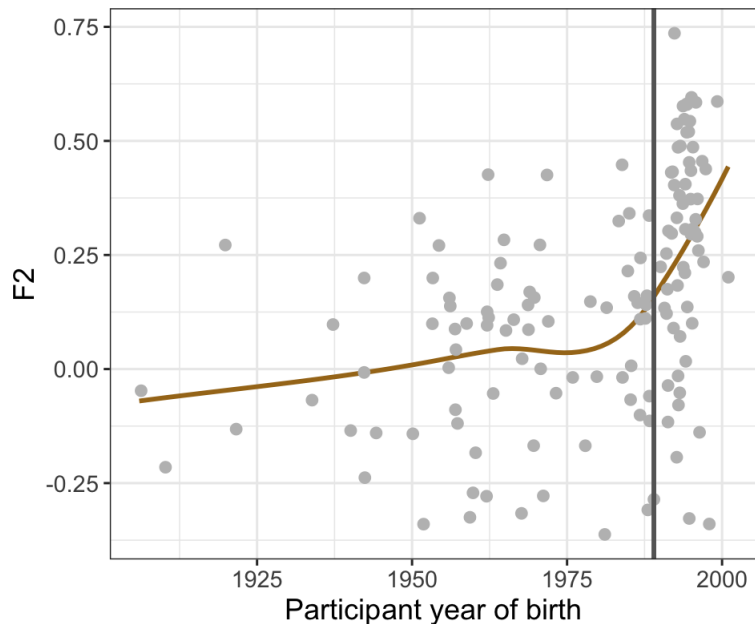


Figure 2: Mean F2 for TOO by participant year of birth.

Importantly, Table 2’s representation of the effect of participant age on TOO-fronting as linear is misleading. Figure 2, which plots by-participant F2 means by participant year of birth, shows that fronting of TOO accelerates sharply with participants born in the 1980s. To better measure the point of inflection in this change, we fit a series of models with breakpoints that effectively model two different slopes for participant year of birth—one before a specified year, and one after. To identify the optimal breakpoint, we fit one model for each year of birth in the sample (1906-2001), and selected as the optimal model that with the smallest total deviance between fitted and observed values (Baayen, 2008). This procedure yields a breakpoint at 1989, indicated by the vertical blue line in Figure 2. We return to these age effects on TOO shortly.

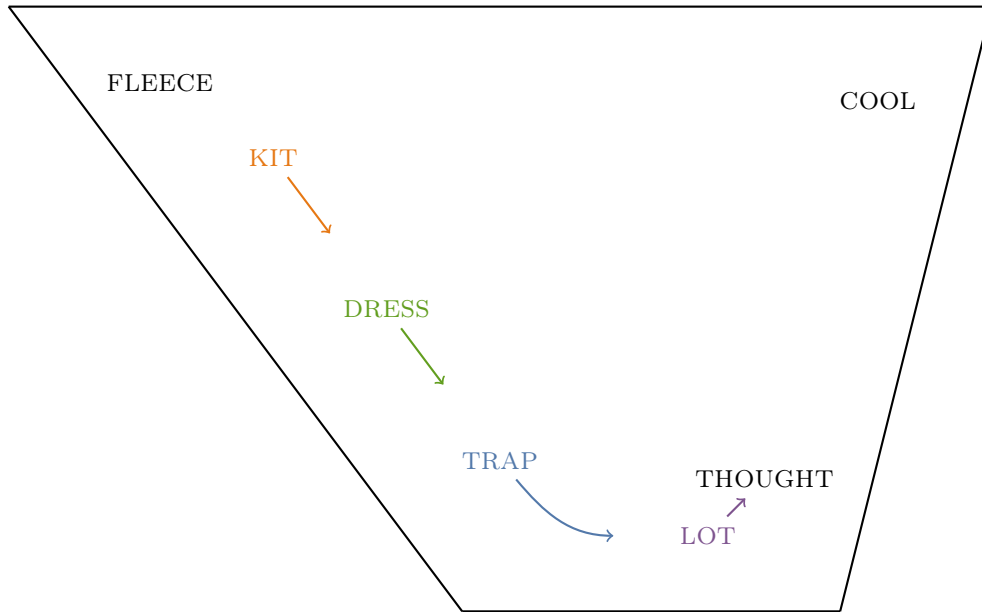
3.2 DRESS-lowering

Lowering of DRESS has been reported in several North American dialects principally as part of the California Vowel Shift (Eckert, 2008; Hall-Lew, 2009; Podesva, 2011; Podesva et al., 2015; Cheng, 2016), Canadian Shift (Clarke et al., 1995; Boberg, 2005; Hoffman, 2010) and Northern Cities Shift (Labov, 1994; Eckert, 2000; Wagner et al., 2016; D’Onofrio and Benheim, 2020; D’Onofrio, 2021). A growing body of recent work has proposed treating the first two of these shifts as a unified phenomenon—termed the “Low back merger shift” in Becker (2019b)—in view of the similar patterns of shift across low and front short vowels, KIT, DRESS, TRAP and LOT (Clarke et al., 1995; Becker, 2019a; Boberg, 2019). In particular, (Becker, 2019a), building on proposals by Thomas (2001); Gordon (2004) and Labov et al. (2005), proposes that merger of LOT and THOUGHT classes creates “instability” in the short vowel system which leads to a pull chain affecting TRAP, DRESS and KIT.

No reports that we are aware of have described an appreciable presence of LOT-THOUGHT merger in production data in New York City English, though Johnson (2007) and Haddican et al. (2016a) report some evidence of merger in homophony judgment data. The fact that the younger speakers in our data set who show shifting of short vowels generally show little evidence of a low back merger in production supports skepticism toward an approach that takes short vowel shifting in NYCE to be “triggered” by a LOT-THOUGHT merger (Kendall and Fridland, 2017; Fridland and Kendall, 2019). Indeed, LOT-THOUGHT approximation in NYCE appears to be a product less of LOT-retraction than of THOUGHT lowering, which we consider shortly (Becker, 2010, 2014). In the remaining discussion, we set aside the issue of the LOT-THOUGHT merger as a possible triggering event.

In the present data set, DRESS lowering correlates across participants with backing of TRAP and LOT, and lowering/backing of KIT, suggesting the possibility of a chain-like shift affecting these neighboring short vowels.¹¹ Again, because our focus is the social patterning of independent processes of change, we do not include all four of these lexical sets in the analysis, but instead choose DRESS, as the set with the greatest number of observations/participant ($M=186$). We are aware of no evidence from perception/attitudinal data suggesting differences in the indexical values of these shifts in the NYCE case.¹²

(3) *The low back merger shift in North America*



We begin with a summary of an LMER model in Table 3. DRESS vowels are lowering along the front diagonal and we therefore use F2-F1 (hereafter “diagonal”) as the dependent measure. (For convenience, we refer to this change simply as “lowering”.) Table 3 lists first an effect of participant age with older participants tending toward raised realizations. Preceding velar sounds and high front vowels favor higher realizations, while preceding labials, liquids and back vowels favor lower realizations. (See Eckert (2000) and Hall-Lew et al. (2015) for descriptions of similar effects in other North American varieties.) Lowering is also favored by following bilabials and [l, ʃ, ʒ]. Lowering is led by women and by White participants, with Black participants favoring more conservative realizations.

Finally, as in the case of TOO-fronting, the linear treatment of the effect of participant age on DRESS-lowering is misleading. Figure 3 shows a precipitous break for front diagonal values, beginning with speakers born in the late 1970s. Applying the procedure described above reveals an optimal breakpoint at 1978, as shown in the plot.

3.3 FACE-raising

A well-described process of change in NYCE’s mid-Atlantic neighbor, Philadelphia English, is raising of FACE in “checked” contexts, that is, those with a word-internal following consonant (Labov, 2001; Labov et al., 2013; Fruehwald, 2013; Tamminga, 2019). FACE raises along the front diagonal in contexts with a word-internal following consonant (*rake*, *baker*), but not in word final “free” position, (*pay*).

Results from the present data set suggest a similar process of change in NYCE. Figure 4 shows a gradual increase in front diagonal values across the timespan included in the sample, for all contexts, with less pronounced raising in surface free and pre-lateral contexts.¹³ Importantly, Figure 4 suggests that this process of change in NYCE shares several properties of the change in Philadelphia as described by Fruehwald (2013, ch. 5). First, the free/checked

	Estimate	Std. Error	df	t value	Pr(> t)
(Intercept)	-0.870	0.104	111.302	-8.402	0.000
Age	0.011	0.003	76.700	4.012	0.000
Preceding: lab., liq, back vowels	-0.319	0.028	300.300	-11.260	0.000
Preceding: velars, front vowels	0.824	0.038	301.272	21.631	0.000
Log₁₀(duration)	-0.692	0.032	13983.290	-21.722	0.000
Following: Bilabials, [l, ʃ, ʒ]	-0.166	0.040	591.359	-4.092	0.000
Gender: Women	-0.115	0.032	82.556	-3.607	0.001
Ethnicity: Latinx	-0.163	0.045	77.723	-3.651	0.000
Asian	-0.174	0.053	80.685	-3.294	0.001
White	-0.218	0.050	77.600	-4.377	0.000

Table 3: Summary of an LMER model of F2-F1 (front diagonal) for DRESS. Model formula: Diagonal \sim Age + Preceding sound * Gender + Log Duration + Following sound + Ethnicity + (Preceding sound + Following sound | Speaker)+ (1 | Word). Obs.=14,171, N=88. Reference levels: *other* for following sound, *other* for preceding sound and *Black* for ethnicity.

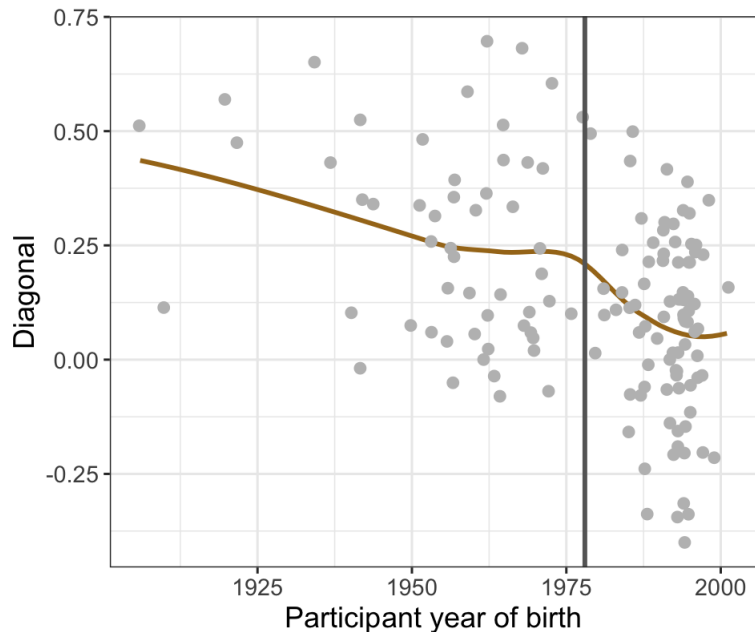


Figure 3: Mean front diagonal for DRESS by participant year of birth.

constraint is insensitive to syllable structure in that vowels in closed syllables (with a following coda consonant) behave like those in open syllables (with a following onset C) in terms of their effect on raising, as suggested by the similar smoother shapes for these contexts. Second, like in Philadelphia English, the free/checked constraint appears to be surface true in that vowels in underlyingly free contexts closed by morphological concatenation behave like vowels in checked contexts otherwise and unlike those in surface-free contexts. Third

and finally, the data suggest that checked contexts with a following [l] may be diverging from elsewhere checked contexts in not participating fully in the change.

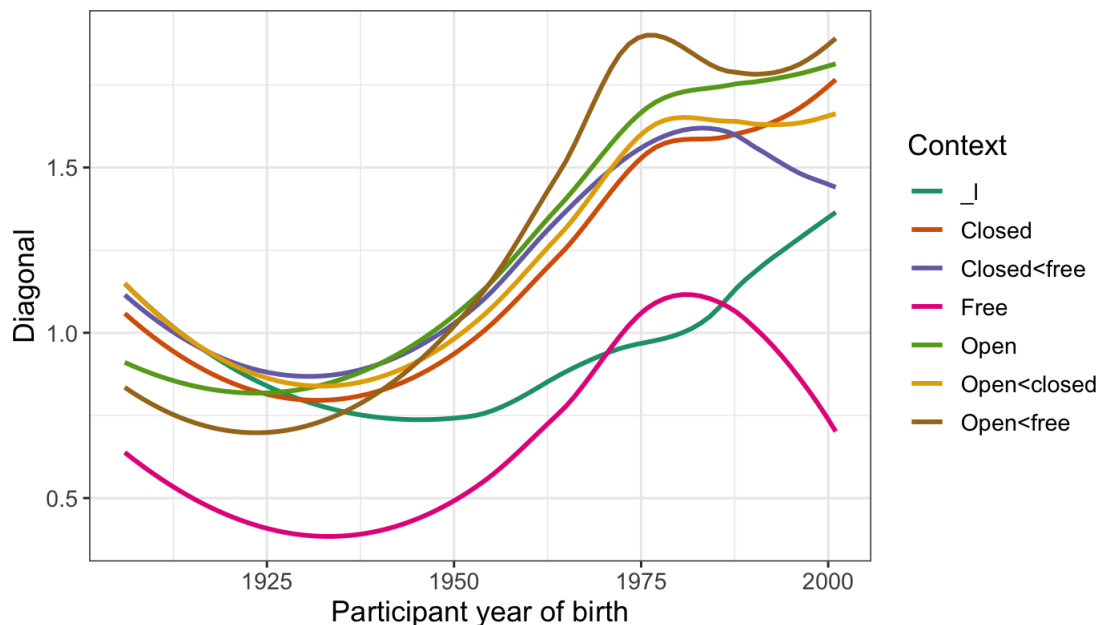


Figure 4: Mean front diagonal for FACE by context and participant year of birth.

We test the relationship between participant age and following context by fitting an LMER model to a sample subset. Figure 4 suggests that checked-FACE raising begins with participants born in the early part of the 20th century. Again, because the current data set is not balanced for participant ethnicity for the earliest years of birth (with White speakers oversampled), we fit a model only for the White participants (N=48). We return to effects of participant ethnicity on FACE later in the discussion. We also exclude from the modeling following [l] and hiatus contexts due to sparse data in these contexts.

We summarize the model in Table 4. The table shows an effect of preceding sound similar to that described for DRESS, above, with preceding velars and front vowels favoring raised realizations and preceding labials, liquids and back vowels favoring lower ones. Most importantly for our purposes, the model includes an interaction term between participant age and context, revealing a more steeply negative slope for participant age in checked contexts.

3.4 PRICE-raising

In NYCE, the nucleus of /aɪ/ in all contexts is traditionally low. Among conservative speakers, this nucleus is somewhat fronted before voiceless sounds and back elsewhere (Kaye, 2012; Newman, 2014). Newman et al. (2018), however, report evidence from spoken corpus data suggesting that this configuration is undergoing leveling to a Canadian Raising pattern described in some other parts of the northeastern US, with raised PRICE in all open checked syllables and in closed syllables before voiceless sounds but lowered PRIZE elsewhere.¹⁴ So *spider* (open but checked syllable) and *spite* has PRICE (closed syllable closed by a voiceless sound). By contrast, *spy* (open free) and *pride* (closed with a voiced sound) have PRIZE

	Estimate	Std. Error	df	t value	Pr(> t)
(Intercept)	0.892	0.126	136.138	7.067	0.000
Context: Checked	0.886	0.118	150.752	7.534	0.000
Age	-0.005	0.002	43.973	-2.830	0.007
Preceding: lab., liq, back vowels	-0.552	0.048	204.776	-11.444	0.000
Preceding: velars, front vowels	0.428	0.057	343.322	7.522	0.000
Log₁₀(duration)	-0.497	0.038	7556.176	-12.950	0.000
Context:Age	-0.007	0.001	45.315	-5.031	0.000

Table 4: Summary of an LMER model of F2-F1 (front diagonal) for FACE. Model formula: Diagonal \sim Context * Age + Preceding sound + Log Duration + (Preceding sound + Context | Speaker)+(1 | Word). Obs.=9031, N=48. Reference levels: *free* for context and *other* for preceding sound.

(Vance, 1987; Dailey-O’Cain, 1997; Hall, 2005; Kaye, 2012; Fruehwald, 2013; Tamminga, 2019, to appear).¹⁵ We illustrate this in Figure 5, which shows change principally in F1 for PRICE items in both closed (*price*) and open syllables (*prices*).¹⁶

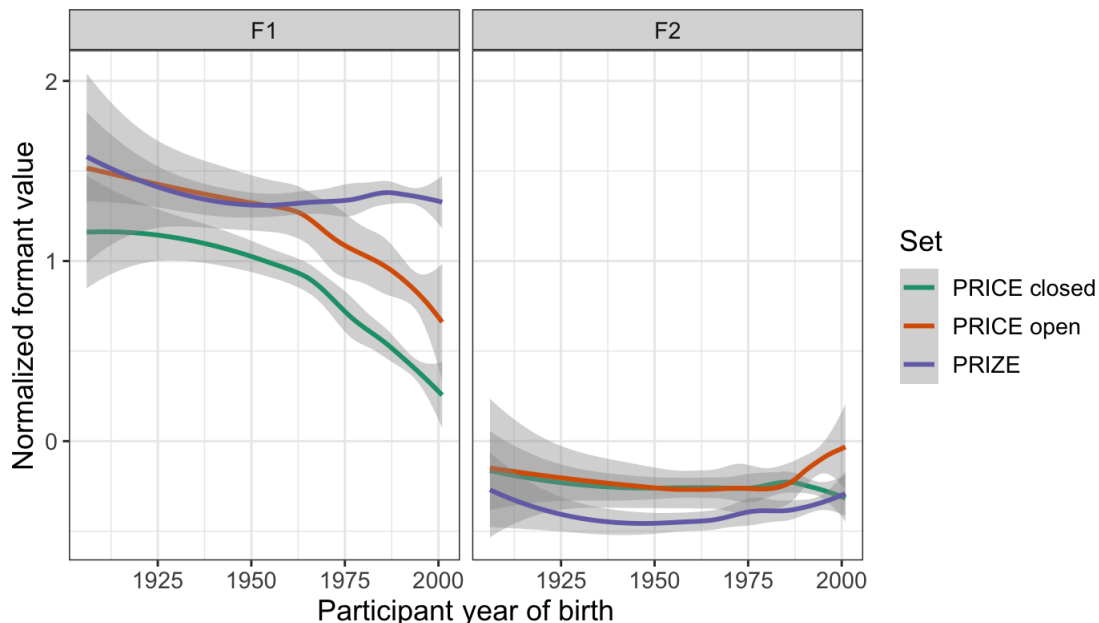


Figure 5: Mean formant values PRIZE and PRICE by participant year of birth.

Table 5 summarizes an LMER model of normalized F1 for PRICE, for the 88-speaker subset of speakers born after 1972. The set of words included are those with PRICE vowels preceding a word-internal underlyingly voiceless sound. For the sake of brevity, we omit discussion of the phonetic predictors in the model, which are unremarkable. Among social predictors, we note an interaction between participant age and gender, with a considerably steeper age slope for women. This suggests that the change toward raised PRICE is progressing fastest among the women in the subsample. In addition, Table 5 shows an effect of

	Estimate	Std. Error	df	t value	Pr(> t)
(Intercept)	1.846	0.174	128.719	10.623	0.000
Following: [k]	-0.033	0.079	90.163	-0.424	0.672
Labials	0.164	0.082	86.833	2.004	0.048
Log₁₀(duration)	1.073	0.021	13894.021	50.713	0.000
Preceding: Labials	0.053	0.066	92.542	0.803	0.424
Other	0.344	0.082	132.772	4.188	0.000
Gender: Women	-0.681	0.197	74.497	-3.455	0.001
Age	0.004	0.005	69.738	0.932	0.354
Ethnicity: Asian	0.045	0.049	80.287	0.904	0.369
Black	0.142	0.053	76.095	2.686	0.009
White	0.119	0.046	77.816	2.556	0.013
Log₁₀(frequency)	-0.059	0.026	91.403	-2.282	0.025
Gender:Age	0.019	0.007	74.255	2.876	0.005

Table 5: Summary of an LMER model of F1 for PRICE for participants born >1972. Model formula: Diagonal~Following sound + Log Duration + Preceding sound + Gender * Age + Ethnicity + Log.freq + (Preceding sound | Speaker) + (1 | Word). Obs.=13,971, N=88. Reference levels: *men* for gender, *Latinx* for ethnicity, *coronals* for Following sound and *coronal sonorants* for Preceding sound. A random slope for following sound by speaker was not fittable.

participant ethnicity with Latinx and Asian participants leading the change, and White and Black participants favoring conservative variants.

3.5 THOUGHT-lowering

The final two lexical sets that we include in our analysis have been described extensively in recent literature on NYCE. For space reasons, we do not report details of our replications of these core findings, but instead summarize the relevant reported facts.

We begin with THOUGHT, which, among conservative speakers, has a raised realization characteristic of many mid-Atlantic varieties (Labov, 1966; Labov et al., 2005, 2013; Newman, 2014). Over the past decade, however, several independent studies have reported evidence of lowering of THOUGHT in NYCE (Wong, 2007; Becker, 2010, 2014; Wong, 2010, 2012, 2014, 2015; Newman, 2014; Wong and Hall-Lew, 2014; Newlin-Łukowicz, 2015, 2016; Shapp, 2019). Becker (2010, 2014) reports that this change is led by White and Asian speakers. While no reports have yet described broad prevalence of the LOT-THOUGHT merger in production, homophony judgment data by Johnson (2007) and Haddican et al. (2016b) support an expansion of the merger in perception, particularly among Asian and Latinx hearers. These findings are in keeping with Becker’s (2014) matched-guise results suggesting raised THOUGHT is associated with older and White speakers. Similarly, in a recent, forced-choice lexical identification study by Ortiz and Haddican (to appear), NYCE-native auditory judges were more likely to perceive merged realizations for LOT-variants in a minimal pair (e.g. [kat] as ‘caught’) when the auditory stimulus was accompanied by a photo of an Asian female face than that of a White female face.

A property that distinguishes raised THOUGHT from other conservative vocalic features introduced above is that it is a strongly emblematic of working class, white New York speech (Becker, 2014; Wong and Hall-Lew, 2014; Singler, 2017; Cutler, 2020). Wong and Hall-Lew (2014), in fact, suggest that the association of raised THOUGHT with “authentic” New Yorker identities, largely associated with Whiteness, is one reason many Chinese-Americans in New York avoid this feature. The possibility of a similar avoidance dynamic for other non-White groups in the NYCE speech community has not been addressed in the literature.

3.6 BAD-lowering

A second well-studied vocalic change in New York City English has to do with reorganization of the short-a system in NYCE. As described in an extensive body of 20th century literature, NYCE, since at least the late nineteenth century, has had a phonemic or quasi-phonemic split between tense and lax short-a lexical sets with the former higher along the front diagonal and sometimes ingliding, [æ̠] or [ɛ̠ə], and the latter low and front, [æ] (Trager, 1930, 1934, 1940; Labov, 1966, 1972, 2007). Over the past decade, however, several independent studies have described a change away from this configuration to one of several different allophonic systems (Becker, 2010, 2016; Becker and Wong, 2010; Newman, 2014; Newlin-Łukowicz, 2015, 2016; Coggshall, 2017; Shapp, 2018; Haddican et al., 2021). Common to all of these descriptions is a process of lowering in a subset of erstwhile tense contexts—those in closed syllables before voiceless fricatives and voiced stops—yielding a merger with lax TRAP. The change is strongly correlated with speaker ethnicity, with non-White speakers leading the change (Becker and Wong, 2010; Becker, 2010; Coggshall, 2017; Haddican et al., 2021). In the analysis presented below, we focus on this subset of contexts undergoing lowering.¹⁷ We denote these as BAD, following Becker (2016).

3.7 Interim summary

We summarize the six changes just introduced by comparing, in Figure 6, patterns for two speakers, one instantiating robustly conservative variants, and the other innovative realizations. The panel on the left plots mean F1 and F2 values for the above six vowels for an older Italian American man (b. 1959) originally from Brooklyn. Note, here, that BAD is high and advanced, there is little distance between DRESS and FACE, THOUGHT is raised, TOO is mid-advanced and PRICE is low. The panel on the right shows the corresponding measurements for an Asian American woman born forty years later. Here, in contrast, BAD is considerably lower and retracted, DRESS and FACE have diverged, THOUGHT has lowered, TOO is quite advanced and PRICE is raised.

In the two-speaker subset represented in these plots, co-occurrence of these six features is clear: innovative variants co-occur in one speaker’s data and conservative variants in the other’s. As we will see shortly, across the larger 140-speaker sample, there is greater variability, in that not all speakers participate in these changes to the same degree. This fact, indeed, is foreshadowed by the divergence in social predictors in the models just summarized. Our goal in the remaining discussion is to describe these co-occurrence patterns, with particular focus on two issues: (i) to what extent these six vocalic features correlate across



(a) Conservative speaker, White man, b. 1959. (b) Innovative speaker, Asian woman, b. 1999.

Figure 6: Mean normalized F1 and F2 values from eight lexical sets for a conservative speaker (panel (a)) and an innovative speaker (panel (b)). Values for FLEECE and COOL, which are not included in the present analysis, are provided for reference.

speakers in our sample, and (ii) whether patterns of co-occurrence have discernable social correlates.

4 Social correlates of covariation

We begin with the first of these issues—the degree to which vocalic innovations co-occur across participants in the sample. Figure 7 plots a matrix of Spearman’s rho values for the fifteen pairwise relationships among the six vocalic changes. Positive relationships are hued red and negative relationships blue, with color intensity denoting relationship strength. The p -values shown are unadjusted for multiple comparisons.

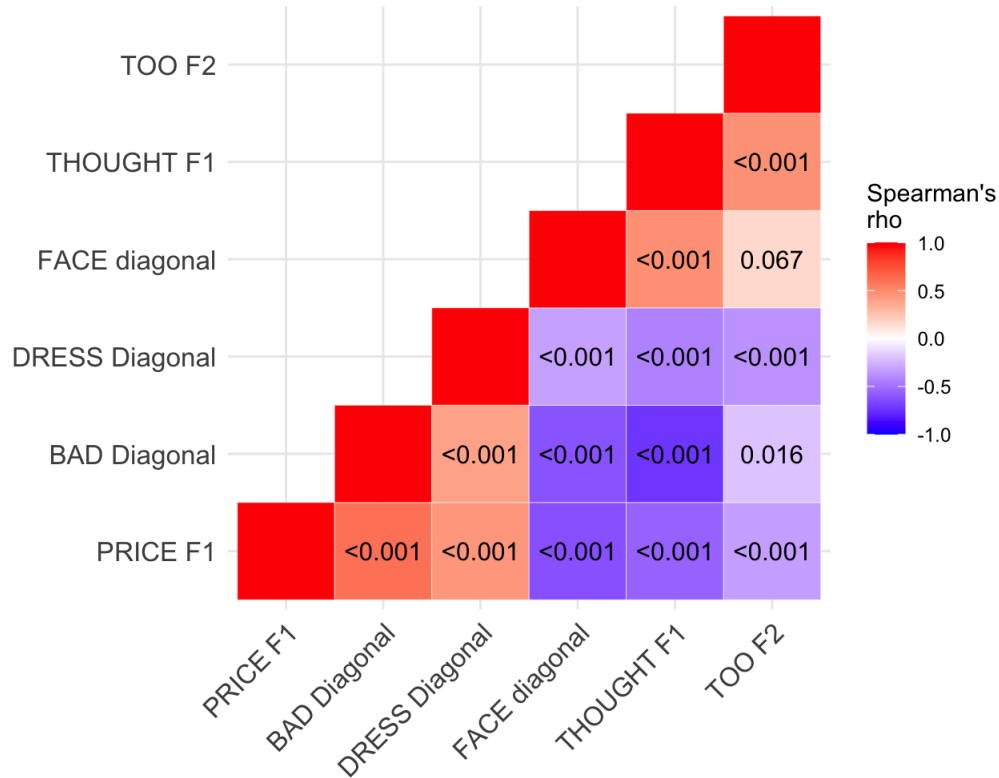


Figure 7: A matrix of Spearman’s rho values showing cross-speaker correlations for six vocalic changes, based on by-speaker random intercepts. N=139. P-values shown for rho < 1.

Somewhat unremarkably, given that all of these features are correlated with speaker age, almost all of the pairwise relationships are significant. As reflected in the figure, however, they differ considerably in strength. The strongest of these is that between the two NYCE shibboleth features—THOUGHT (F1) and BAD (front diagonal)—with a rho of -.73, suggesting a fairly strong co-occurrence across speakers (Labov, 1966; Becker, 2016; Newlin-Łukowicz, 2016). The other pairwise relationships, however, are all moderate or weak (for all, $|\text{rho}| \leq .63$), suggesting considerable variation in the way these features are distributed across speakers.

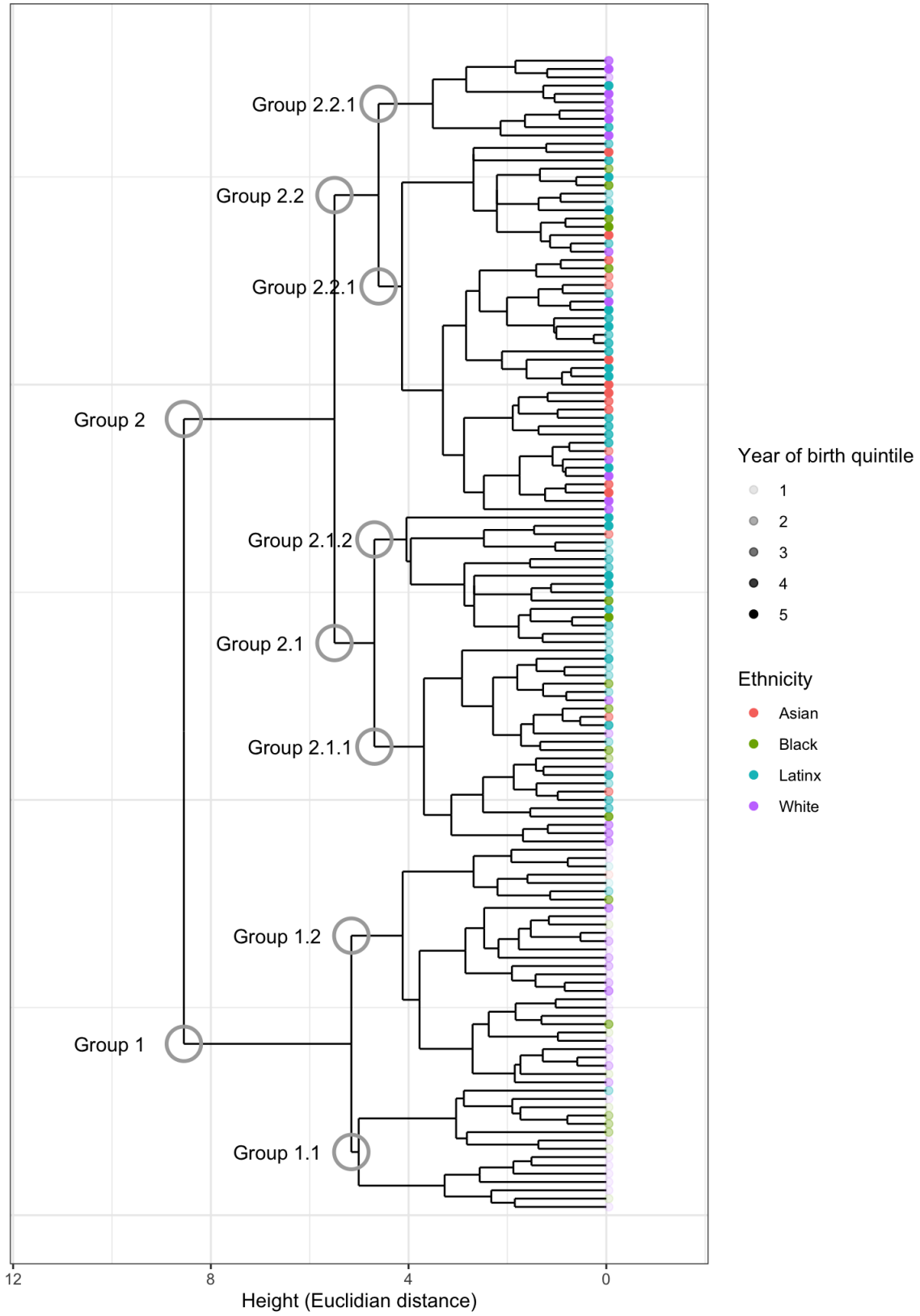


Figure 8: Dendrogram of a divisive cluster analysis. N=139.

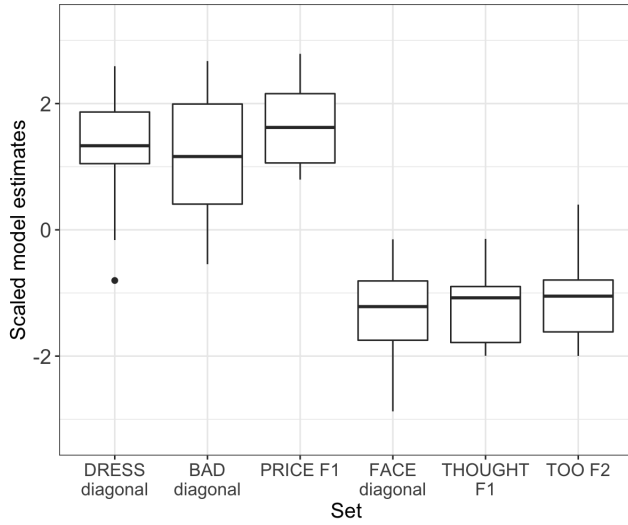
At issue, then, is how these features cluster across speakers and whether these clusters have social correlates. We address this issue via a cluster analysis summarized in the dendrogram in Figure 8. The cluster analysis identifies groups of participants with similar sets of measurements across these six lexical sets. It allows social correlates of covariation across the sets to emerge from the data, unlike in regression modeling, where social predictors are determined prior to analysis. In the present data set, cluster membership correlates strongly with participant age and ethnicity. The points at 0 along the x-axis are individual participants color-coded by ethnic category. Shading denotes quintile of participant year of birth, with younger speakers more darkly hued¹⁸. The points corresponding to each participant are terminal nodes, and each higher level node connects two sets of speakers. The length of each branch corresponds to the Euclidean distance (square root of sum of squares of difference) between the vocalic measurements for the two nodes. Each node, therefore, represents, for its two daughter nodes, relative (dis-)similarity in by-participant measurements for these six vowels, i.e. the higher the node, the more dissimilar the two clusters joined.

The highest level split in the analysis distinguishes two sets of participants labeled Group 1 and Group 2 in Figure 8. As reflected in the figure, a principal social correlate of this split is participant age, with a mean year of birth of 1955.0 for Set 1 and 1988.6 for Group 2 ($t(53.4)=11.76$, $p<.0001$).

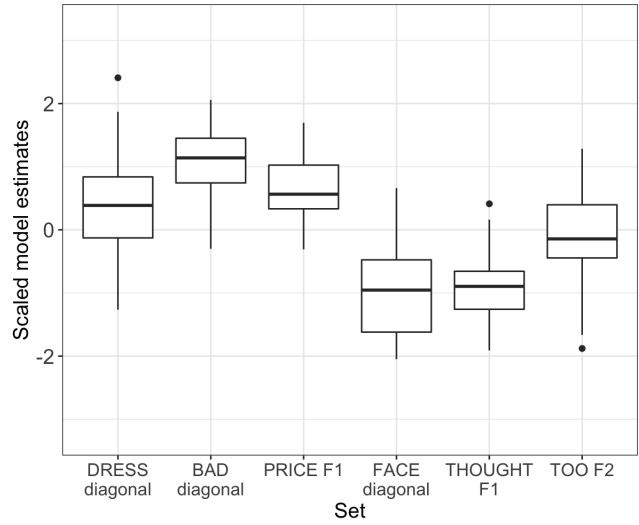
Within the older group, two principal subsets, labeled 1.1 and 1.2 in Figure 8, bear discussion. The first of these, a set of 15 participants, is the most conservative, and, on aggregate, the oldest set of participants in the sample with a mean year of birth of 1945.5. These participants are mainly White (8) and Black (6) with one Latinx member, reflecting the imbalance of ethnic category among older participants in the sample. Typical of this group of speakers are the conservative realizations shown in Figure 6a, and discussed in Section 3.7. The clusterings in Figure 8, however, are not based on these raw normalized values but rather on by-speaker random intercepts (see Section 2), and in the discussion to follow we therefore discuss these distributions. These measurements for Group 1.1 are presented in Figure 9a, which shows conservative values for each of the six lexical sets: high values for DRESS and BAD diagonals and PRICE F1, and low values for FACE diagonal, THOUGHT F1 and TOO F2.

The sister of the node dominating Group 1.1 is Group 1.2, a set of 29 participants somewhat younger than Group 1.1 with a mean year of birth of 1959.9 ($t(21.5)=2.42$, $p=.0244$), and also largely White (20 White, 5 Black, 3 Latinx, 1 Asian). We plot model estimates for this group in Figure 9b, which shows mainly conservative variants, but with some movement away from the monolithically traditional patterns characteristic of Group 1.1. Change is clear across all sets except for BAD.

The node labeled Group 2 in Figure 8, branches to two groups labeled Group 2.1 and Group 2.2, which we discuss in turn. Group 2.1 splits to two clusters labeled 2.1.1 and 2.1.2 in Figure 8. As shown in the figure, these two subsets are similar in age with mean years of birth 1981.6 and 1987.0 respectively (n.s.). As also reflected in the figure, both groups are predominantly Latinx, Group 2.1.2 particularly so (13 Latinx, 2 Black, 1 Asian). Model estimates for these two groups are given in Figure 10. Relative to their elders in Group 1, both of these sets of speakers show change across the six vocalic sets, with the exception of TOO, which shows sharply conservative realizations, particularly for Group 2.1.2. These results are in keeping with much previous literature reporting innovative variants for BAD



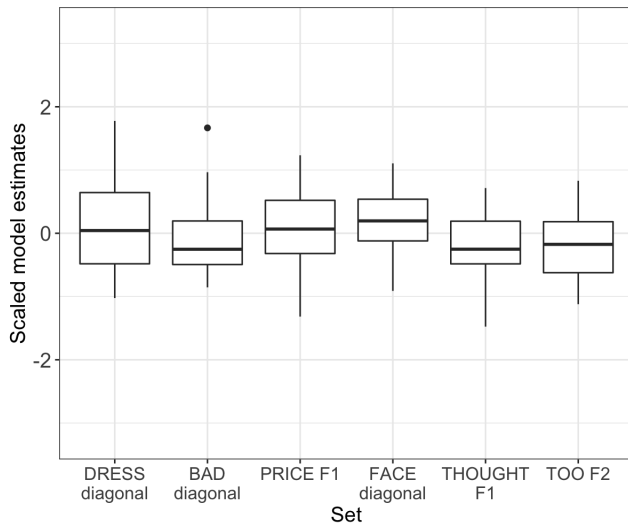
(a) Group 1.1. N=15.



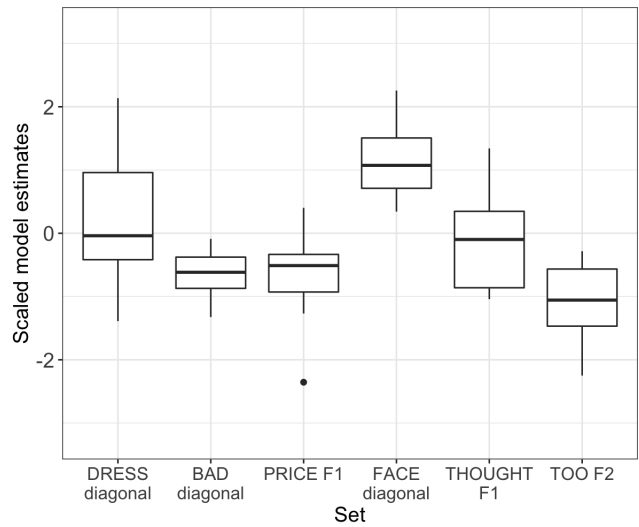
(b) Group 1.2. N=29.

Figure 9: Scaled random intercepts for six lexical sets for Group 1.1 (panel (a)) and Group 1.2 (panel (b)).

(Becker and Wong, 2010; Becker, 2009; Haddican et al., 2021), and conservative variants for back vowels (Fought, 1999; Newman, 2014) among some younger Latinx speakers. Also, notable are sharply raised values for FACE, for group 2.1.2.



(a) Group 2.1.1 N=24.



(b) Group 2.1.2. N=16.

Figure 10: Scaled random intercepts for six lexical sets for Group 2.1.1 (panel (a)) and Group 2.1.2 (panel (b)).

The final set of clusters that we consider are Groups 2.2.1 and 2.2.2, containing, on aggregate, the youngest speakers in our sample with mean years of birth 1992.1 and 1992.3 respectively (n.s.). As reflected in the figure, these two groups differ markedly in their ethnic

composition. Eight of the ten participants in 2.2.2 are White, with the remaining two Latinx (one of whom identifies also as White). In addition, seven of these ten participants report that both of their parents themselves grew up in New York City. In contrast, Group 2.2.1 is ethnically mixed, but predominantly non-White: 21 Latinx, 13 Asian, 6 White and 5 Black. Of these 45 participants, only seven describe their parents as being native New Yorkers.

The distributions of by-speaker random intercepts for these two groups are provided in Figure 11. The panel on the left, corresponding to Group 2.2.1 shows innovative patterns across all six lexical sets, akin to the pattern in the F1~F2 plot in Figure 6b. Particularly notable are the extreme values for THOUGHT F1 and BAD diagonal. This set of speakers, then, constitutes the vanguard of movement away from raised BAD and THOUGHT. In contrast, the data for Group 2.2.2 in the right panel of Figure 11, show much more conservative values for both BAD and THOUGHT vis-à-vis those for Group 2.2.1. (Indeed, Group 2.2.2’s values for BAD are even more conservative than those for their elders in Figure 10.) Importantly, while the participants in Group 2.2.2 are conservative with respect to BAD and THOUGHT, they are more innovative than Group 2.2.1 for two other changes: TOO-fronting and DRESS-lowering. That is, this set of predominantly White speakers is not globally conservative with respect to change, but rather selectively so—resisting change only for those accent features most strongly associated with working class New York City White speakers, namely raised BAD and THOUGHT. For supra-local TOO-fronting and DRESS-lowering, especially, the speakers in Group 2.2.2, indeed, are the leaders of innovation. Importantly, the constancy across time in the effects of ethnicity suggests no evidence of reorganization in patterns of covariation across the timespan represented in this sample. (See Tamminga (to appear) for evidence of change in patterns of covariation in Philadelphia.)

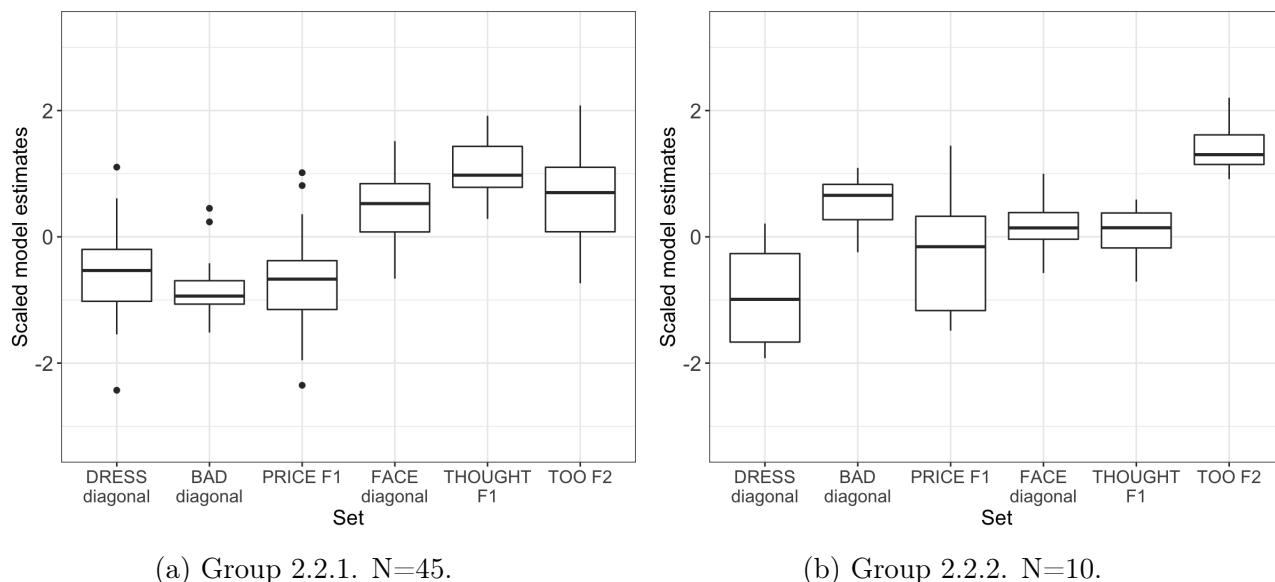


Figure 11: Scaled random intercepts for six lexical sets for Group 2.1 (panel (a)) and Group 2.2 (panel (b)).

The two panels in Figure 11, then, might be taken to instantiate two different ways of being young New Yorkers through accent features, each indexing different sets of meanings

associated with age, ethnicity and place. Younger non-Whites (panel a) have moved sharply away from traditional local raised realizations for BAD and THOUGHT, a finding consistent with previous results (Becker, 2010, 2014; Becker and Wong, 2010; Coggshall, 2017; Shapp, 2018). In contrast, the younger White speakers (panel b) who are most conservative with respect to local features, are also those leading change toward innovative variants of supra-local TOO and DRESS. This mixing and matching of innovative forms is reminiscent of Watt’s (2002) description of young Geordies’ use of [ø:] for GOAT—a compromise between traditional Geordie [ʊə] and Southern [ou], which Watt takes as a strategy for signaling a younger “modern” orientation without forsaking local roots.

Our results generally support recent findings suggesting considerable “incoherence” across innovations in a population—i.e. that it is typically *not* the case that speakers in a community are uniform in their relative rates of participation in multiple unrelated changes (Guy, 2013; Oushiro and Guy, 2015; Becker, 2016; Waters and Tagliamonte, 2017; Tamminga, 2019, to appear). As the recent literature suggests, however, the presence vs. absence of covariation, may be, to a degree, predictable. Guy (2013) and Oushiro and Guy (2015) note that covariation is structurally constrained, i.e. is observed in pairs of features for which an abstract structural relationship exists. This possibility is also supported by the extensive literature on cross-speaker correlations in chain shifts (Eckert, 2000; Watt, 2000; Haddican et al., 2013; Fruehwald, 2013; Kendall and Fridland, 2017; Fridland and Kendall, 2019; Becker, 2019b). As discussed earlier, however, Tamminga (2019) suggests that patterns of covariation across variables are also predictable from the social embedding of the linguistic features involved. In particular, Tamminga reports that the features exhibiting coherence across speakers all have the property of being localized features undergoing reversal. Similarly, Becker (2016) and Newlin-Łukowicz (2016), propose that co-occurrence of several different traditional NYCE accent features is constrained by meanings of authenticity and/or orientation to local vs. supra-local communities.

The results presented above align with findings by Becker (2016), Newlin-Łukowicz (2016) and Tamminga (2019) in that the sets of features exhibiting the greatest cross-speaker covariation form natural classes, sociolinguistically speaking. More specifically, covariation appears to be conditioned by how and to what extent these vocalic features are locally indexed. Among younger speakers, the two highly localized features—raised BAD/THOUGHT covary—as do the two a-local “off the shelf” innovations broadly attested across North American varieties—DRESS-lowering and TOO-fronting (Milroy, 2009; Wong, 2014).¹⁹ The final two changes we have examined—PRICE and FACE-raising—are neither highly emblematic local features nor broadly distributed off the shelf changes, and do somewhat less work in discriminating between clusters.²⁰

5 Conclusion

This paper has described patterns of cross-speaker covariation across six independent vocalic changes in New York City English. The results suggest that these variants are selectively recruited by participants in production in a way strongly conditioned by meanings of age, ethnicity and place in the community. Of the six vocalic changes described here, two in particular—raised THOUGHT and (to a lesser extent) raised BAD—have been reported in

recent work to be strongly associated with traditional White working class New York City personas (Becker, 2014; Wong and Hall-Lew, 2014; Singler, 2017; Cutler, 2020). Values for these two features correlate strongly across participants in our study, with conservative variants favored by White participants in our sample. Importantly, however, White participants in our sample do not uniformly favor conservative variants and, indeed, across age groups, White speakers are leading in fronting of TOO and lowering of DRESS. Work on the way meanings of ethnicity, age and place condition change in lesser studied lexical sets in NYCE would benefit from further controlled experimental and ethnographic evidence, of the kind that has recently focused on THOUGHT (Becker, 2014; Singler, 2017; Cutler, 2020; Ortiz and Haddican, to appear).

A further finding is that several of the changes currently taking place in NYCE are very similar to those described for its mid-Atlantic neighbor, Philadelphia English. Changes reorganizing the short-a system in the two cities have been observed to be similar in nature, but the two processes have not been compared in detail. (See, though, discussion in Haddican et al. (2021).) The present results suggest that other changes including back vowel fronting, THOUGHT-lowering and FACE raising may also be shared across the two cities. The nature of the co-occurrence of these changes across the two urban populations warrants further study.

Acknowledgements

We are grateful to the participants in this study and our bright CUNY undergraduate research collaborators for all they have taught us. We are grateful also to two very insightful American Speech reviewers, and to Benji Wald, C. E. A. Diertani, Beatrice Santorini, Meredith Tamminga and Lacey Wade. This work is supported by NSF Grant Numbers BCS-1630274, BCS-1630377, BCS-1630286, BCS-1629348, and BCS-1152148, a CUNY Collaborative Incentive Research Grant (2129), and the CUNY Advanced Research Collaborative Fellowship (ARC) program.

Notes

¹Contexts before tautosyllabic voiced stops and voiceless fricatives, following Becker’s (2016) labeling.

²Measurement points were those used in FAVE default specifications.

³The ethnic category labels are aggregations based on participants’ self described ethnicity. The categories used are motivated based on previous work on ethnicity and change in NYCE (see references throughout). The group *Asian* includes participants who identify with East Asian and South Asian ancestry, who participate similarly in the processes of change considered here. *Black* includes participants self identifying as African American or Afro-Caribbean.

⁴Participants were coded for whether at least one parent is NYCE-native. Preliminary revealed this to be a more predictive measure than one that separates participants based on whether both parents are NYCE-native.

⁵Subjects were coded on a five-point scale following Baranowski and Turton (2018). 1=Unskilled laborers. 2=skilled laborers. 3=lower white collar, retail and current university students. 4=lower professionals including teachers, engineers and manager. 5=higher professional occupations.

⁶Frequencies were taken from the Subtlex corpus (Brysbaert and New, 2009).

⁷Mean values were centered and then divided by the standard deviation for each set.

⁸That is:

(4)

$$\sqrt{\sum_{i=1}^n (x_i - y_i)^2}$$

⁹For the model of TOO, Preceding sound was not included as a control predictor.

¹⁰The set of labials, [l] and low back vowels.

¹¹The relevant TRAP contexts here are short-a vowels not involved in the phonological reorganization away from the traditional NYCE split-pattern. We return to these facts shortly. See Haddican et al. (2021) on the correlation between LOT and TRAP backing in NYCE.

¹²See D’Onofrio et al. (2019) on TRAP-backing and Valley Girl personae in California.

¹³Example items for the contexts in Figure 4: pre-/l/, *bail*; closed, *afraid*; closed<free, *betrayed*; free, *way*; hiatus, *staying*; open, *volcano*; open<checked, *waking*; open<free, *playful*.

¹⁴There is, however, some variation: the name *Heidi* can be pronounced either way as can *high school*.

¹⁵In the present data set, a parallel change is observed with MOUTH, that is with raised nuclei in pre-voiceless contexts among younger participants. The latter lexical set has fewer observations per participant ($M=41.7$), than does PRICE ($M=130.1$) and we focus on the latter in the remaining discussion.

¹⁶All but a handful of the open syllable items in our sample are underlyingly closed, so we cannot directly assess the effect of a morphological boundary as distinct from syllable structure in the data set. In perception, however, NYCE speakers typically report a *writer/rider* distinction (Fruehwald, 2013; Newman et al., 2018).

¹⁷The authors are grateful to Benji Wald for help with judgments on individual items and for guidance on various issues related to change in short-a.

¹⁸We use age quintile only to make the distribution of speaker ages better visible in the plot.

¹⁹See Mesthrie (2010) on diffusion of GOOSE fronting across race groups in South African English.

²⁰See Tamminga (to appear) on the emergence of FACE-PRICE covariation in Philadelphia.

References

- Anbinder, Tyler. 2016. *City of dreams: The 400-year epic history of immigrant New York*. Houghton Mifflin Harcourt.
- Baayen, R. Harald. 2008. *Analyzing linguistic data: A practical introduction to statistics using R*. Cambridge: Cambridge University Press.
- Baranowski, Maciej and Danielle Turton. 2018. “Locating speakers in the socioeconomic hierarchy: towards the optimal indicators of social class”. Presentation given at NWA 47.
- Bates, Douglas, Martin Mächler, Ben Bolker, and Steve Walker. 2015. “Fitting Linear Mixed-Effects Models Using lme4”. *Journal of Statistical Software* 67, no. 1: 1–48. URL <http://dx.doi.org/10.18637/jss.v067.i01>.
- Becker, Kara. 2009. “/r/ and the construction of place identity on New York City’s Lower East Side”. *Journal of Sociolinguistics* 13, no. 5: 634–658.
- Becker, Kara. 2010. “Regional dialect features on the Lower East Side of New York City: Sociophonetics, ethnicity, and identity”. Ph.D. thesis, New York University.
- Becker, Kara. 2014. “The social motivations of reversal: Raised bought in New York City English”. *Language in Society* 43, no. 4: 395–420.
- Becker, Kara. 2016. “Linking community coherence, individual coherence, and bricolage: The co-occurrence of (r), raised BOUGHT and raised BAD in New York City English”. *Lingua* 172: 87–99.

- Becker, Kara. 2019a. "Introduction". In "The Low-Back-Merger Shift: Uniting the Canadian Vowel Shift, the California Vowel Shift, and Short Front Vowel Shifts across North America", , edited by Kara Becker, volume 104. pages 1–30. URL <http://dx.doi.org/10.1215/00031283-8032913>.
- Becker, Kara, editor. 2019b. *The Low-Back-Merger Shift: Uniting the Canadian Vowel Shift, the California Vowel Shift, and Short Front Vowel Shifts across North America*, volume 104. URL <http://dx.doi.org/10.1215/00031283-8033373>.
- Becker, Kara and Elizabeth L Coggshall. 2009. "The sociolinguistics of ethnicity in New York City". *Language and Linguistics Compass* 3, no. 3: 751–766.
- Becker, Kara and Amy Wing Wong. 2010. "The short-a system of New York City English: an update". *University of Pennsylvania Working Papers in Linguistics* 15, no. 2: 3.
- Boberg, Charles. 2005. "The Canadian shift in Montreal". *Language Variation and Change* 17, no. 2: 133.
- Boberg, Charles. 2019. "A closer look at the Short Front Vowel Shift in Canada". *Journal of English Linguistics* 47, no. 2: 91–119.
- Brysbaert, Marc and Boris New. 2009. "Moving beyond Kučera and Francis: A critical evaluation of current word frequency norms and the introduction of a new and improved word frequency measure for American English". *Behavior research methods* 41, no. 4: 977–990.
- Cheng, Andrew. 2016. "A Survey of English Vowel Spaces of Asian American Californians". *UC Berkeley PhonLab Annual Report* 12, no. 1.
- Clarke, Sandra, Ford Elms, and Amani Youssef. 1995. "The third dialect of English: Some Canadian evidence". *Language variation and Change* 7, no. 2: 209–228.
- Coggshall, Elizabeth Learn. 2017. "Short-a in the Sixth Borough: A Sociophonetic Analysis of a Complex Phonological System in Jersey City". Ph.D. thesis, New York University.
- Cutler, Cecelia. 2020. "Metapragmatic comments and orthographic performances of a New York accent on YouTube". *World Englishes* 39, no. 1: 36–53.
- Dailey-O’Cain, Jennifer. 1997. "Canadian raising in a midwestern U.S. city". *Language Variation and Change* 9: 107–120.
- D’Onofrio, Annette. 2021. "Age-based perceptions of a reversing regional sound change". *Journal of Phonetics* 86: 101038.
- D’Onofrio, Annette and Jaime Benheim. 2020. "Contextualizing reversal: Local dynamics of the Northern Cities Shift in a Chicago community". *Journal of Sociolinguistics* 24, no. 4: 469–491.
- D’Onofrio, Annette, Teresa Pratt, and Janneke Van Hofwegen. 2019. "Compression in the California Vowel Shift: Tracking generational sound change in California’s Central Valley". *Language Variation and Change* 31, no. 2: 193–217.
- Eckert, Penelope. 2000. *Language variation as social practice: The linguistic construction of identity in Belten High*. Malden, Mass.: Wiley-Blackwell.
- Eckert, Penelope. 2008. "Where do ethnolects stop?" *International Journal of Bilingualism* 12, no. 1-2: 25–42.
- Foner, Nancy. 2001. *New Immigrants in New York*. Columbia University Press.
- Fought, Carmen. 1999. "A majority sound change in a minority community:/u/-fronting in Chicano English". *Journal of Sociolinguistics* 3, no. 1: 5–23.
- Fridland, Valerie and Tyler Kendall. 2019. "On the Uniformity of the Low-Back-Merger Shift

- in the US West and Beyond”. In “The Low-Back-Merger Shift: Uniting the Canadian Vowel Shift, the California Vowel Shift, and Short Front Vowel Shifts across North America”, , edited by Kara Becker, volume 104. Duke University Press, pages 100–119.
- Fruehwald, Josef. 2013. “The phonological influence on phonetic change”. Ph.D. thesis, University of Pennsylvania.
- Gordon, Matthew J. 2004. “The West and Midwest: Phonology”. In “A Handbook of Varieties of English, vol. 1. Phonology”, , edited by Edgar W. Schneider, Kate Burridge, Bernd Kortmann, Rajend Masthrie, and Clive Upton. Berlin: De Gruyter Mouton, pages 338–350.
- Gorman, Kyle, Jonathan Howell, and Michael Wagner. 2011. “Prosodylab-aligner: A tool for forced alignment of laboratory speech”. *Canadian Acoustics* 39, no. 3: 192–193.
- Guy, Gregory R. 2013. “The cognitive coherence of sociolects: How do speakers handle multiple sociolinguistic variables?” *Journal of Pragmatics* 52: 63–71.
- Haddican, Bill, Cecelia Cutler, Alessa Farinella, and Tsu Zhu. 2019. “The arrival of Back Vowel Fronting in New York City English”. Poster presentation given at NWAV 48.
- Haddican, Bill, Paul Foulkes, Vincent Hughes, and Hazel Richards. 2013. “Interaction of social and linguistic constraints on two vowel changes in northern England”. *Language Variation and Change* 25, no. 3: 371–403.
- Haddican, Bill, Daniel Ezra Johnson, and Nanna Haug Hilton. 2016a. “Constant effects and the independence of variants in controlled judgment data”. *Linguistic Variation* 16, no. 2: 247–266.
- Haddican, Bill, Michael Newman, Cecelia Cutler, and Christina Tortora. 2021. “Aspects of change in New York City English short-a”. *Language Variation and Change* 33, no. 2: 135–163.
- Haddican, Bill, Michael Newman, Daniel Ezra Johnson, and Faith Kim. 2016b. “The diffusion of the low back merger in New York City”. *New Ways of Analyzing Variation* 45.
- Hall, Kathleen Currie. 2005. “Defining Phonological Rules over Lexical Neighborhoods: Evidence from Canadian Raising”. In “Proceedings of the 24th West Coast Conference on Formal Linguistics”, , edited by John et al. Alderete. pages 191–199.
- Hall-Lew, Lauren. 2009. “Ethnicity and phonetic variation in a San Francisco neighborhood”. Ph.D. thesis, Stanford University.
- Hall-Lew, Lauren, Amanda Cardoso, Yova Kemenchedjieva, Kieran Wilson, Ruairidh Purse, and Julie Saigusa. 2015. “San Francisco English and the California vowel shift.” In “Paper presented at The 18th International Conference of the Phonetic Sciences, Glasgow, United Kingdom,”, .
- Hoffman, Michol F. 2010. “The role of social factors in the Canadian Vowel Shift: Evidence from Toronto”. *American Speech* 85, no. 2: 121–140.
- Johnson, Daniel Ezra. 2007. *Stability and change along a dialect boundary: The low vowels of Southeastern New England*. Duke University Press.
- Kauffman, Leonard and Peter J. Rousseeuw. 1990. *Finding Groups in Data*. Hoboken: Wiley.
- Kaye, Jonathan. 2012. “Canadian raising, eh?” In “Sound Structure and Sense: Studies in Memory of Edmund Gussmann”, , edited by ed. E Cyran, H Kardela, and B Szymanek. Lublin: Wydawnictwo KUL, pages 321–352.
- Kendall, Tyler and Valerie Fridland. 2017. “Regional relationships among the low vowels of

- US English: Evidence from production and perception”. *Language Variation and Change* 29, no. 2: 245–271.
- Kuznetsova, Alexandra, Per Bruun Brockhoff, and Rune Haubo Bojesen Christensen. 2016. *lmerTest: Tests in Linear Mixed Effects Models*. URL <http://CRAN.R-project.org/package=lmerTest>. R package version 2.0-30.
- Labov, William. 1966. *The social stratification of English in New York City*. Washington, D.C.: Center for Applied Linguistics.
- Labov, William. 1972. *Sociolinguistic patterns*. 4. University of Pennsylvania Press.
- Labov, William. 1994. *Principles of Linguistic Change: Linguistic Factors, Volume I*. Oxford, UK: Blackwell Publishing.
- Labov, William. 2001. *Principles of Linguistic Change: Linguistic Factors, Volume II*. Oxford, UK: Blackwell Publishing.
- Labov, William. 2007. “Transmission and diffusion”. *Language* 83, no. 2: 344–387.
- Labov, William, Sharon Ash, and Charles Boberg. 2005. *The atlas of North American English: Phonetics, phonology and sound change*. Walter de Gruyter.
- Labov, William, Ingrid Rosenfelder, and Josef Fruehwald. 2013. “One hundred years of sound change in Philadelphia: Linear incrementation, reversal, and reanalysis”. *Language* : 30–65.
- Lobanov, Boris M. 1971. “Classification of Russian vowels spoken by different speakers”. *The Journal of the Acoustical Society of America* 49, no. 2B: 606–608.
- Mesthrie, Rajend. 2010. “Socio-phonetics and social change: Deracialisation of the GOOSE vowel in South African English”. *Journal of Sociolinguistics* 14, no. 1: 3–33.
- Milroy, Lesley. 2009. “Off the shelf or under the counter? On the social dynamics of sound changes”. In “Studies in the History of the English Language III”, , edited by Christopher M. Cain and Geoffrey Russom. De Gruyter Mouton, pages 149–172.
- Newlin-Łukowicz, Luiza. 2015. “Ethnicity, L1 interference, and sound change in New York City”. Ph.D. thesis, New York University.
- Newlin-Łukowicz, Luiza. 2016. “Co-occurrence of sociolinguistic variables and the construction of ethnic identities”. *Lingua* 172: 100–115.
- Newman, Michael. 2014. *New York City English*. Walter de Gruyter.
- Newman, Michael, Bill Haddican, and Zi Zi Gina Tan. 2018. “Almost everyone in New York is raising PRICES”. *University of Pennsylvania Working Papers in Linguistics* 24, no. 2: 10.
- Ortiz, Omar and Bill Haddican. to appear. “Cot in the Act: Speaker Ethnicity Conditions Lexical Identification in the Context of the Low-Back Merger in New York City English”. *Penn Working Papers in Linguistics* .
- Oushiro, Livia and Gregory R Guy. 2015. “The effect of salience on co-variation in Brazilian Portuguese”. *University of Pennsylvania Working Papers in Linguistics* 21, no. 2: 18.
- Podesva, Robert J. 2011. “The California vowel shift and gay identity”. *American Speech* 86, no. 1: 32–51.
- Podesva, Robert J, Annette D’Onofrio, Janneke Van Hofwegen, and Seung Kyung Kim. 2015. “Country ideology and the California vowel shift”. *Language Variation and Change* 27, no. 2: 157–186.
- R Core Team. 2014. *R: A Language and Environment for Statistical Computing*. R Foundation for Statistical Computing, Vienna, Austria. URL <http://www.R-project.org/>.

- Reddy, Sravana and James Stanford. 2015. “A web application for automated dialect analysis”. In “Proceedings of the 2015 Conference of the North American Chapter of the Association for Computational Linguistics: Demonstrations”, pages 71–75.
- Rosenfelder, Ingrid, Josef Fruehwald, Keelan Evanini, Scott Seyfarth, Kyle Gorman, Hilary Prichard, and Jiahong Yuan. 2014. “FAVE (Forced Alignment and Vowel Extraction). Version 1.1.3” .
- Shapp, Allison. 2018. “The short-a split in a suburban area of the New York City dialect region”. *Proceedings of the Linguistic Society of America* 3, no. 1: 63–1.
- Shapp, Allison. 2019. “A Sociophonetic Analysis of New York City English in the Speech of Teenagers from Nassau County, Long Island”. Ph.D. thesis, New York University.
- Singler, John. 2017. “Extra, extra! How “Brooklynese” emerged as the term for NYC vernacular, Talk given at CUNY”.
- Tamminga, Meredith. 2019. “Interspeaker covariation in Philadelphia vowel changes”. *Language Variation and Change* 31, no. 2: 119–133.
- Tamminga, Meredith. to appear. “Leaders of language change: Macro and micro perspectives”. In “Studies in Language Variation: Selected Papers of ICLaVE 10”, , edited by Hans van de Velde, Remco Knooihuizen, and Nanna Haug Hilton. John Benjamins.
- Thomas, Erik R. 2001. “An acoustic analysis of vowel variation in New World English”. *Publication of the American Dialect Society* .
- Tortora, Christina, Cece Cutler, William Haddican, Michael Newman, Beatrice Santorini, and C.E. Ariel Diertani. in progress. “Corpus of New York City English (CUNY-CoNYCE)”. URL <https://conyce.commons.gc.cuny.edu/>.
- Trager, George L. 1930. “The Pronunciation of “Short A” in American Standard English”. *American Speech* 5, no. 5: 396–400.
- Trager, George L. 1934. “What conditions limit variants of a phoneme?” *American Speech* 9, no. 4: 313–315.
- Trager, George L. 1940. “One phonemic entity becomes two: the case of ‘short a’”. *American Speech* 15, no. 3: 255–258.
- Vance, Timothy J. 1987. ““Canadian Raising” in some dialects of the northern United States”. *American Speech* 62, no. 3: 195–210.
- Wagner, Suzanne E, Alexander Mason, Monica Nesbitt, Erin Pevan, and Matt Savage. 2016. “Reversal and re-organization of the Northern Cities Shift in Michigan”. *University of Pennsylvania Working Papers in Linguistics* 22, no. 2: 19.
- Waters, Cathleen and Sali A Tagliamonte. 2017. “Is one innovation enough? Leaders, covariation, and language change”. *American Speech* 92, no. 1: 23–40.
- Watt, Dominic. 2000. “Phonetic parallels between the close-mid vowels of Tyneside English: Are they internally or externally motivated?” *Language Variation and Change* 12, no. 01: 69–101.
- Watt, Dominic. 2002. “‘I don’t speak with a Geordie accent, I speak, like, the Northern accent’: Contact-induced levelling in the Tyneside vowel system”. *Journal of Sociolinguistics* 6, no. 1: 44–63.
- Wong, Amy. 2007. “Two vernacular features in the English of four American-born Chinese”. *University of Pennsylvania working papers in Linguistics* 13, no. 2: 17.
- Wong, Amy Wing-mei. 2010. “New York City English and second generation Chinese Americans”. *English Today* 26, no. 3: 3–11.

- Wong, Amy Wing-mei. 2012. "The lowering of raised-THOUGHT and the low-back distinction in New York City: Evidence from Chinese Americans". *University of Pennsylvania Working Papers in Linguistics* 18, no. 2: 18.
- Wong, Amy Wing-mei. 2014. "GOOSE-fronting among Chinese Americans in New York City". *University of Pennsylvania Working Papers in Linguistics* 20, no. 2: 23.
- Wong, Amy Wing-mei. 2015. "Diverse Linguistic resources and multidimensional identities: A study of the Linguistic and identity repertoires of second generation Chinese Americans in New York City". Ph.D. thesis, New York University.
- Wong, Amy Wing-mei and Lauren Hall-Lew. 2014. "Regional variability and ethnic identity: Chinese Americans in New York City and San Francisco". *Language & Communication* 35: 27–42.